

Remark® Testing Solutions

The Remark solutions make grading multiple choice bubble sheets a snap. Use plain paper forms and your own printer to save thousands of dollars on form costs. Or take advantage of the OMR scanner you already own with our easy to use grading software. All of our products produce reports that provide you with student, class and item analysis data for your tests. In addition, you can export data and grades to various formats and gradebooks for analysis.

Which Product is Right for You?



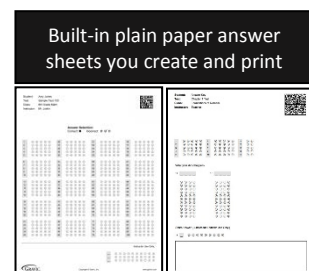
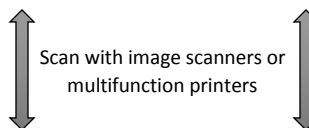
Remark Office OMR is our flagship plain paper scanning program that works with forms you create and print in-house. You can use an image scanner or multi-function printer to scan the forms and then Remark produces grade reports, graphs and charts. This multi-purpose product also reads other form types such as evaluations and surveys.



Remark Test Grading is built off of Remark Office OMR's technology, but includes the ability to create custom answer sheets with various answer types and schemas. Enter or import teacher, class, and student information, which is then printed on the test forms. Like Remark Office OMR, you can use an image scanner or multi-function printer to scan the forms and then Remark produces grade reports, graphs and charts. Remark Test Grading is available as locally installed software on Windows computers or as a cloud subscription, giving you access from any web browser and freeing up IT resources.



Remark Classic OMR includes all the functionality of Remark Office OMR but works with traditional OMR scanners from Scantron, Apperson, Sekonic, and Chatsworth Data, and pre-printed forms that you purchase or design. Like Remark Office OMR, it has all the reporting to interpret grades and reads other form types such as evaluations and surveys.



Gravic, Inc. – Remark Products Group

Website: www.remarksoftware.com

Phone: 1.800.858.0860 or +1.610.647.7850

FAX: +1.610.647.8771

Email: Sales@gravic.com

Product Comparison Chart

Products	Remark Office OMR	Remark Test Grading		Remark Classic OMR
Software Type	Installed	Installed	Cloud	Installed
Form Types				
Reads plain paper forms	√	√	√	
Works with forms you create in Word or other outside design programs	√			
Includes test answer sheet designer to build custom answer sheets		√	√	
Reads traditional OMR forms				√
Includes teacher, class, and student information on forms		√	√	
Can scan surveys, evaluations, ballots and other types of forms (not only tests)	√			√
Scanners				
Works with an image scanner	√	√	√	
Works with a multifunction printer	√	√	√	
Email completed image files for processing			√	
Works with a traditional OMR scanner				√
Mark Types				
OMR (bubbles, checkboxes)	√	√	√	√
Barcodes	√			√*if installed on scanner
OCR (machine-printed text)	√			
Data Analysis and Reporting				
Exports data and grades to CSV, Excel, Access, and more	√	√	√	√
Exports to gradebooks and learning management systems	√	√	√	√
Exports reports as PDFs	√	√	√	√
Provides class and student based reports	√	√	√	√
Provides item analysis reports	√	√	√	√
Grading Features				
Set correct, incorrect point values	√	√	√	√
Set benchmark scores	√	√	√	√
Report on specific learning objectives	√	√	√	√
Allow more than one correct response	√	√	√	√
Custom grade scales	√	√		√
Compare scores across different demographics	√			√
Utilize scaled scores	√			√
Multiple answer key support	√		√	√
	Remark Office OMR	Remark Test Grading		Remark Classic OMR
		Installed	Cloud	